

What is Jasperactive?

CCI Learning's cutting-edge kinesthetic learning platform. It offers a live in-app learning experience that provides the learner with opportunities for hands-on program application of new concepts and real-world scenarios.

Why Jasperactive for Microsoft Office?

It's mapped to Certiport's Microsoft Office Specialist (MOS) exams and certifications, globally accepted, standard-based credentials for validating Microsoft Office skills.

Upon completion, secondary and post-secondary learners and, those re-entering the workforce will be prepared to advance academically and professionally.

Learners can explore their potential and develop their knowledge and skills in a broad range of topics. These certifications are sought after in every industry and discipline.

Career Exploration: sales, marketing, finance, operations, program and project management, analytics, engineering, and entrepreneurship.

Superior Learning Experience

- In-app hands-on learning experience that:
- Uses eBook and exercises to reinforce learning
- Uses an exercise-based approach with real-life context

Enhanced User Experience Designed to:

- Support institutions of all sizes globally
- Be evergreen with regular program updates and new features
- Reduce up to 85% of classroom preparation time with instructor resources
- Deploy, scale and onboard quickly with virtual and in-person training
- Be robust and secure

Flexible and Accessible Learning

- Learn 24/7 in a class or remote with easily accessible resources
- Mapped to Certiport's exam objectives
- Integrated practice tests to validate knowledge



Available Courses:

Microsoft Office 2016
Microsoft Office 2019/365
Microsoft Office Online

English
Spanish
Vietnamese (2016 only)

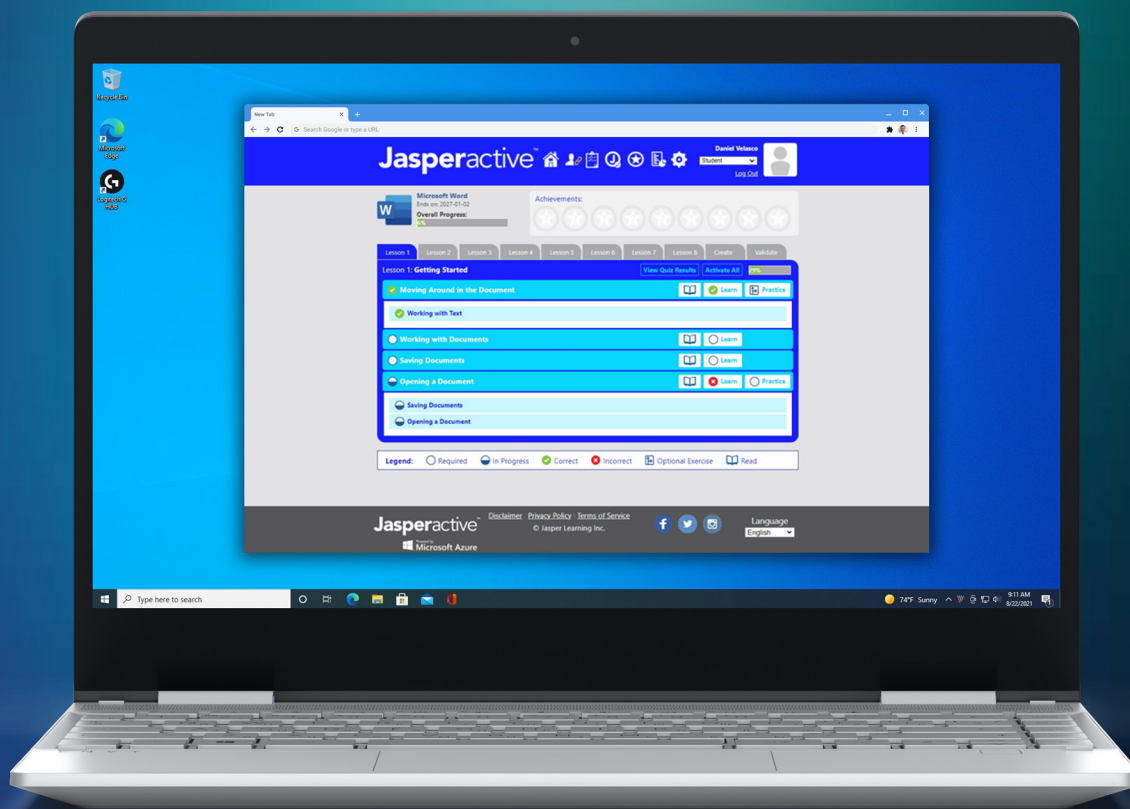


CCI Learning[®]
IGNITING POSSIBILITIES

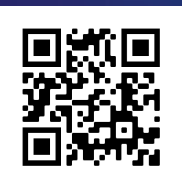
ccilearning.com

Jasperactive Features

	Instructor	Learner
A unique in-app hands-on learning experience that provides the freedom to learn at any pace, any place and time	●	●
Coverage of the certification objectives	●	●
Benchmark - An assessment that evaluates knowledge and skill level	●	●
Learn new concepts in small digestible bites	●	●
Build knowledge with 'Learn Task'	●	●
Option to retry 'Learn Tasks' to ensure understanding of learning	●	●
Each lesson includes a 'Practice Exercise' and 'Practice Questions'	●	●
Each Unit includes a problem based learning 'Create Project'	●	●
Each Unit includes an 'Objective Assessment'	●	●
Course progress available in the Gradebook option	●	●
Ability to create multiple groups	●	●
Ability to add multiple instructors for the group	●	●
Search for learners if they're already registered in the institution	●	●
Full Level courses available with your instructor account	●	●
Instructors control how the course is delivered - perspective or all course content	●	●
Lesson notes include tips and general information for topics as well as exercise steps	●	●
Lesson presentation files include scripts to guide instructors through lesson topics	●	



LEARN MORE



For more information contact your Certiport Territory Manager or visit www.certiport.com